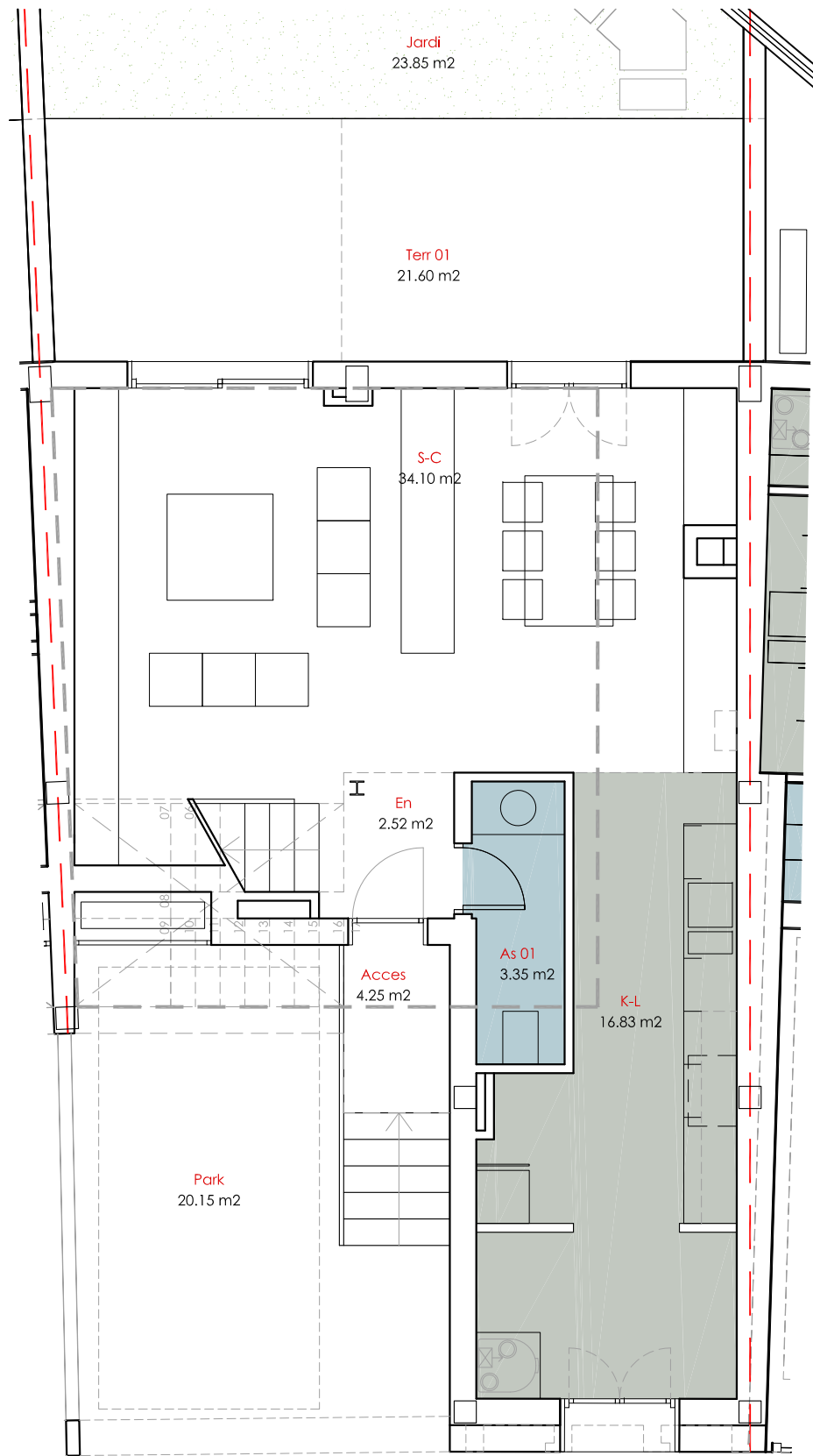
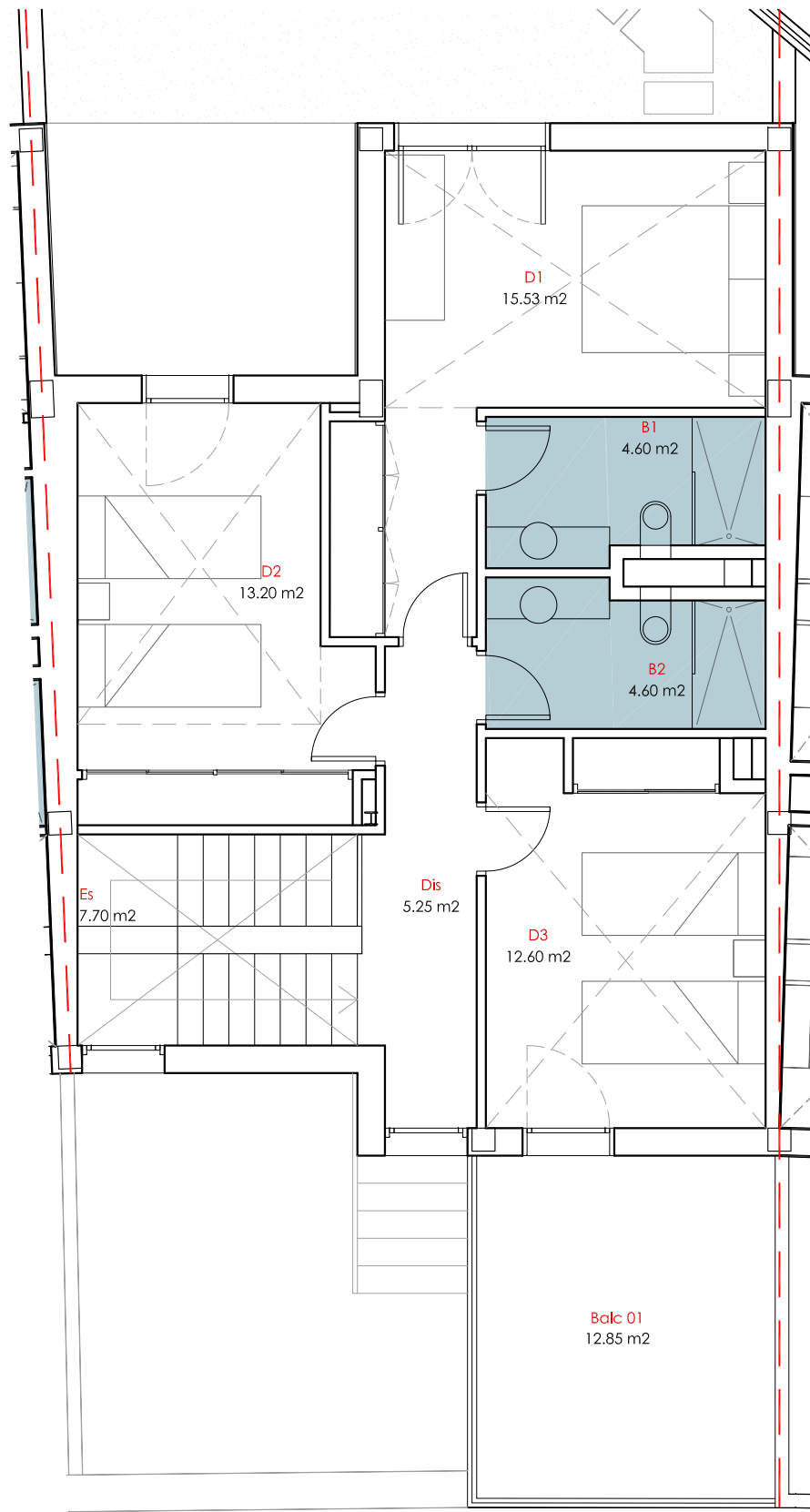


Implantation

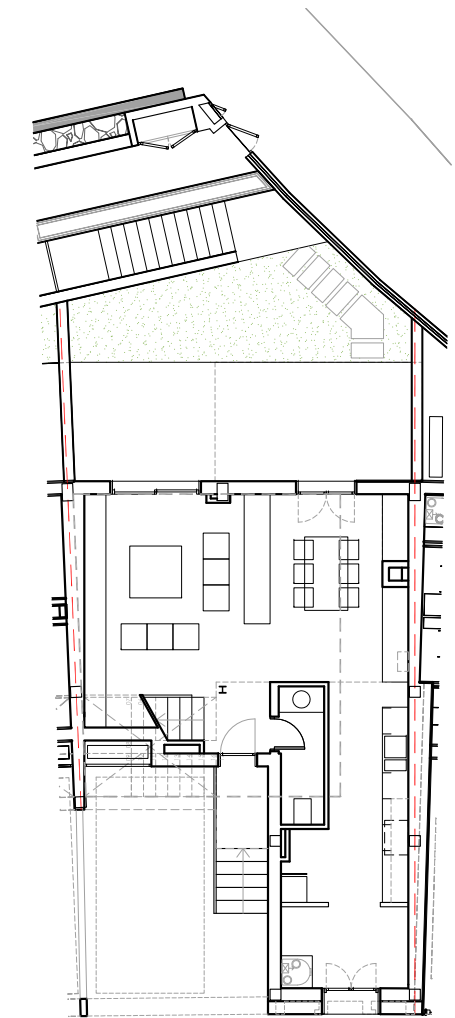


V12

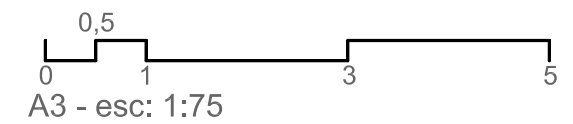
Ground floor



First floor



Parcel



Vivienda 12

Superficie construida vivienda - Living build area
149.03m² (PB: 71.77m² + P1: 77.26m²)

Superficie construida terrazas - Terraces build area
54.60m² (20.15m² + 21.60m² + 12.85m²)

Superficie ajardinada - Garden area
23.85 m²