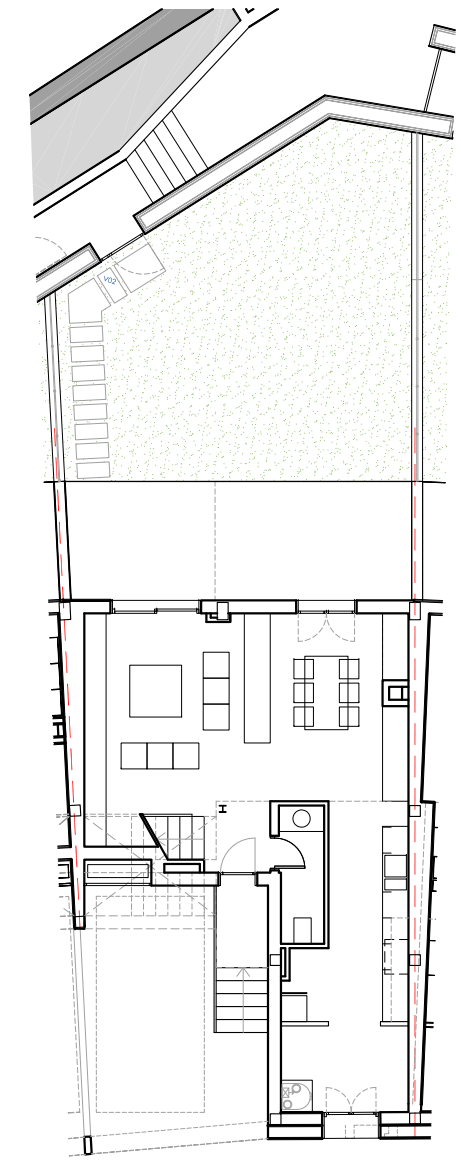
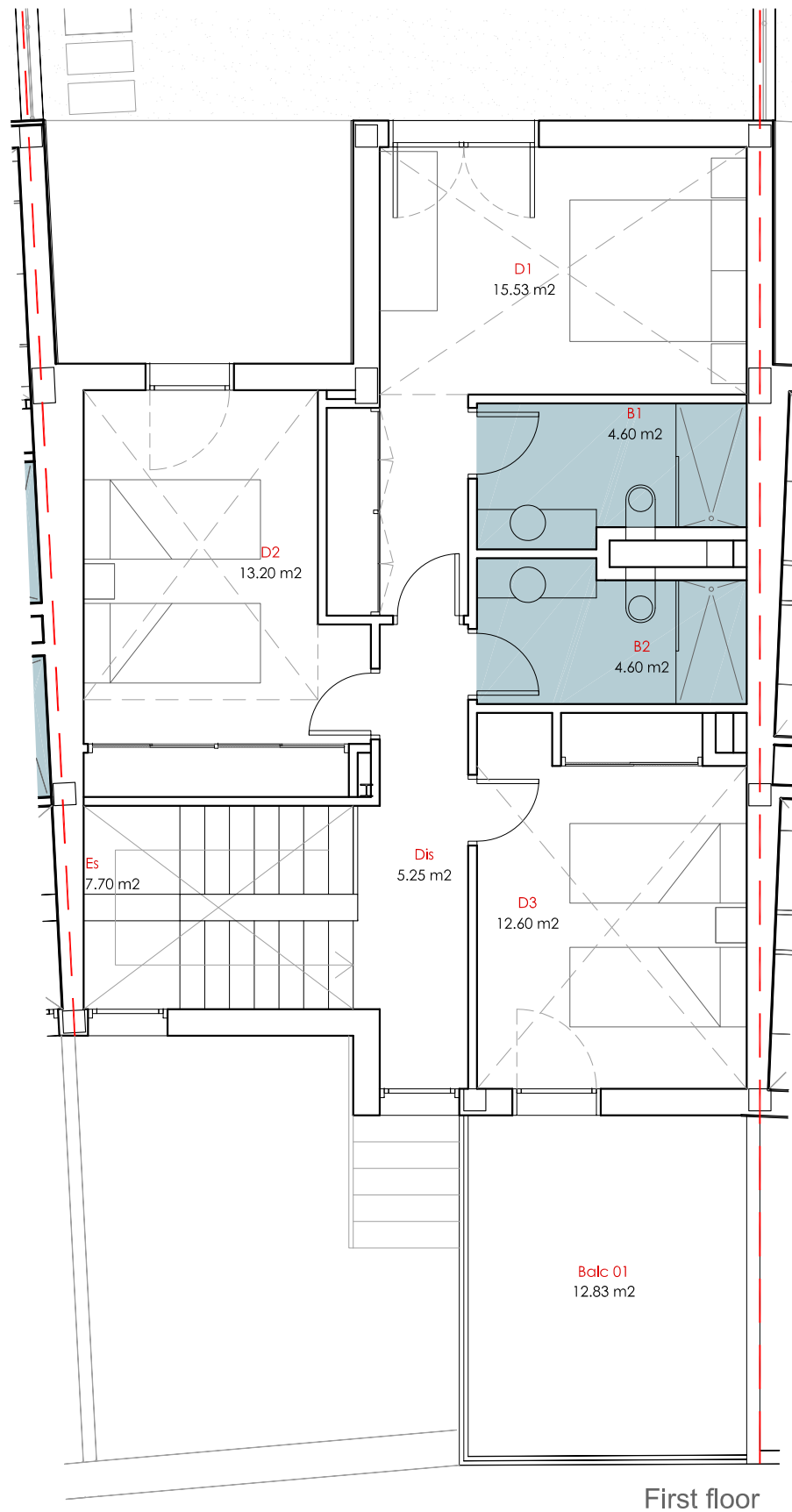
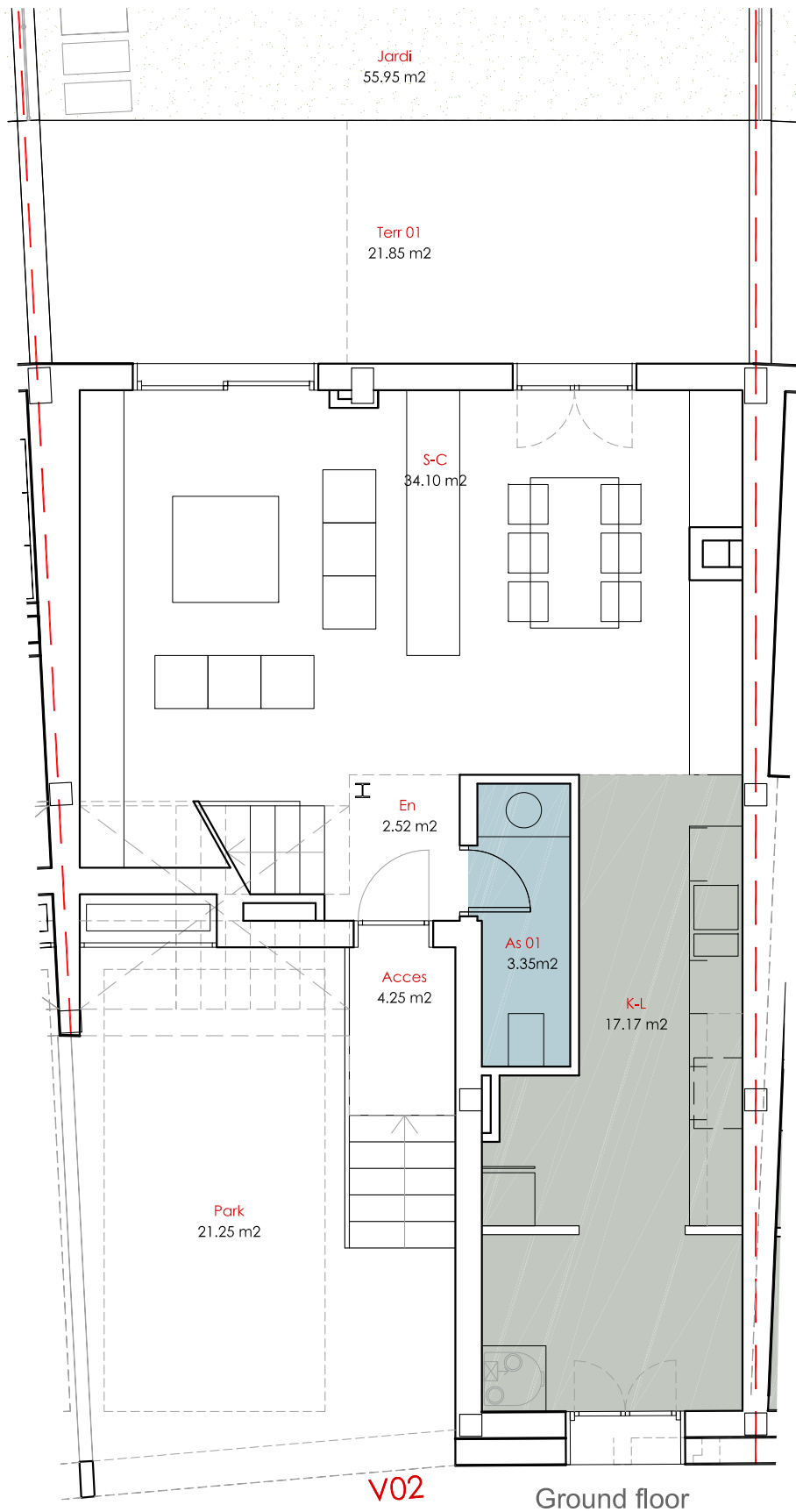
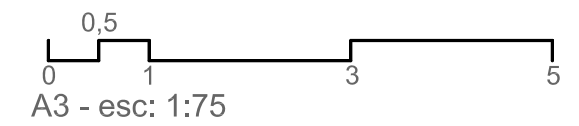


Implantation



Parcel



Vivienda 02

Superficie construida vivienda - Living build area
150.32 m² (PB: 72.59m² + P1: 77.73m²)

Superficie construida terrazas - Terraces build area
55.93m² (21.25m²+ 21.85m² + 12.83m²)

Superficie ajardinada - Garden area
55.95 m²