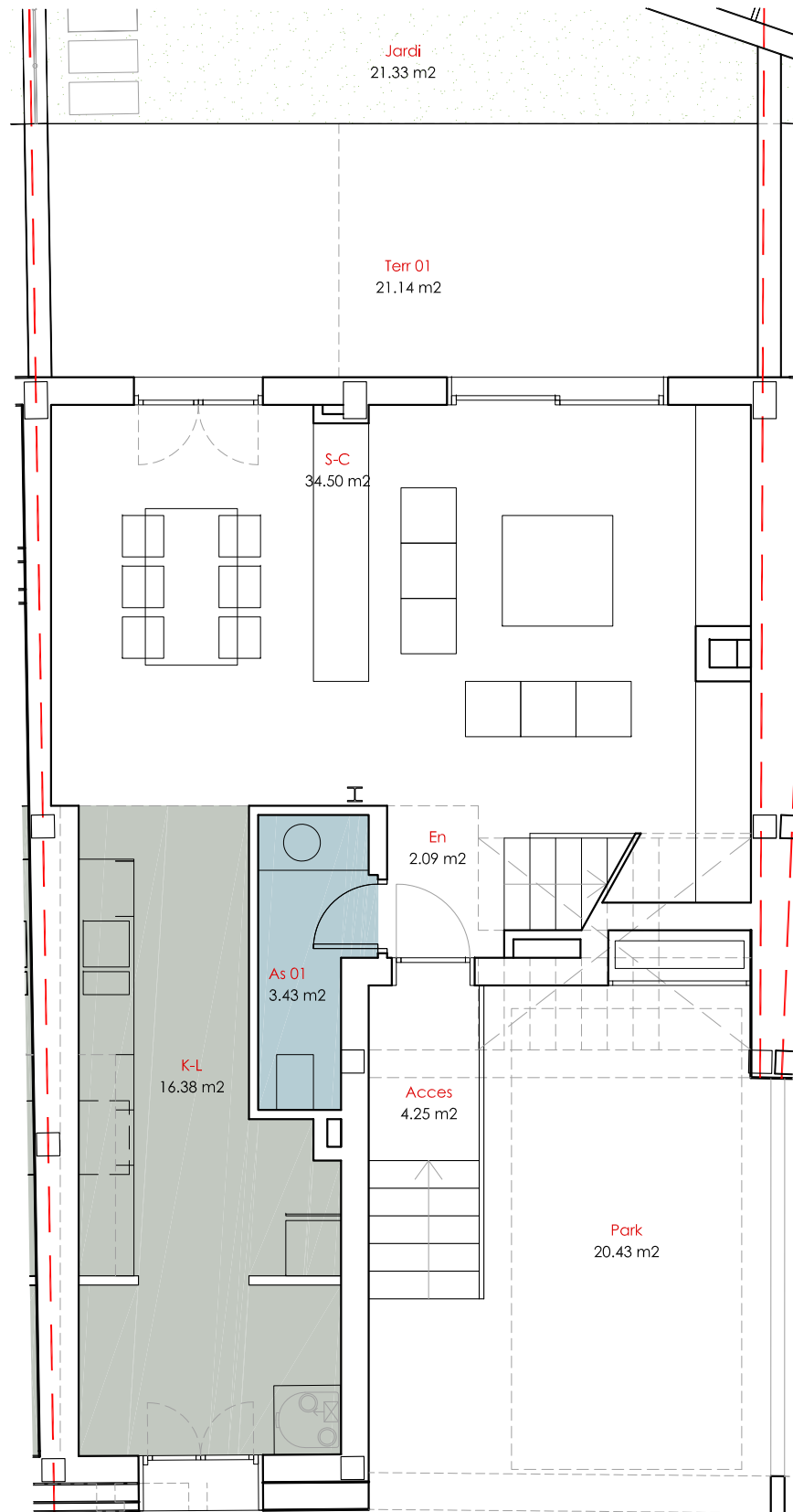
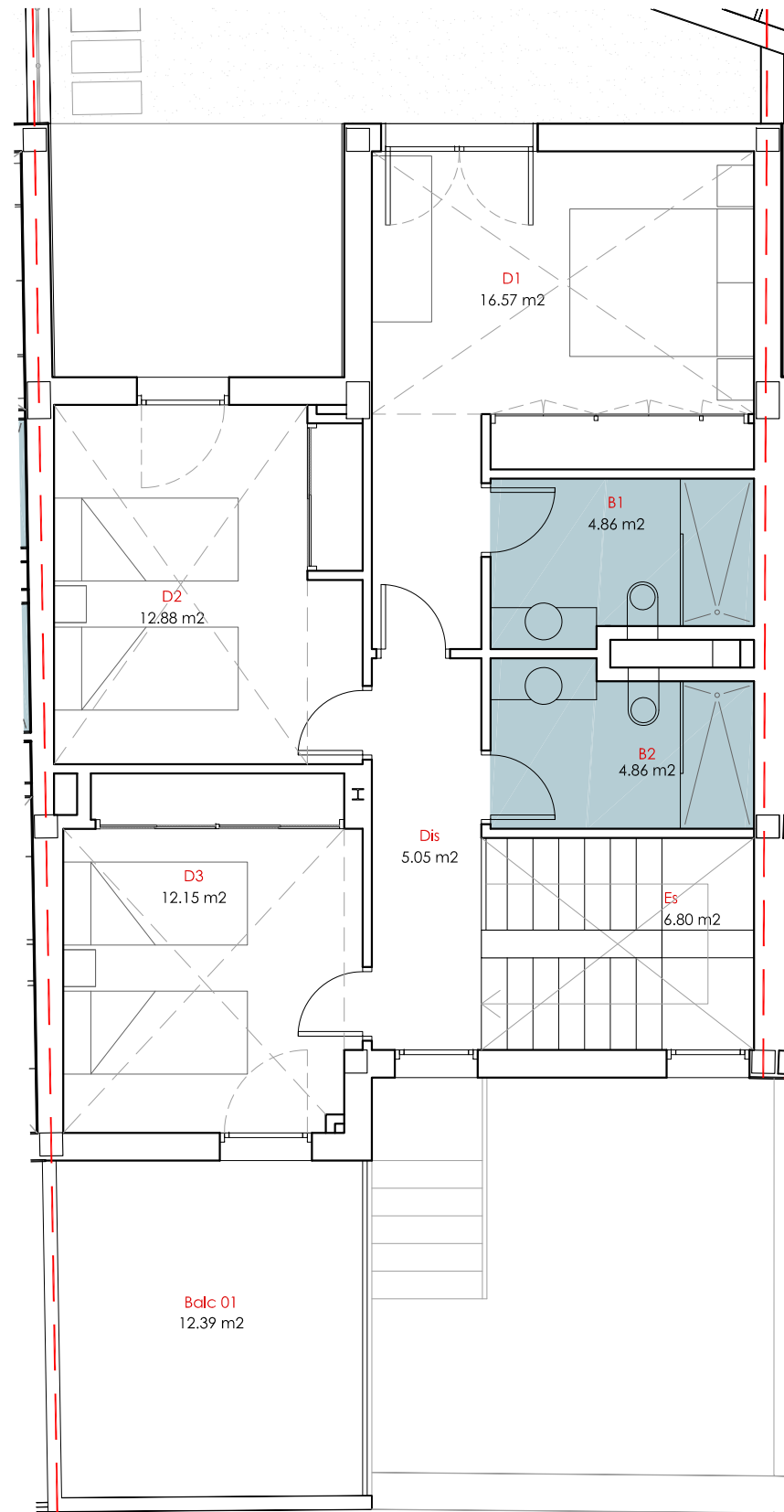


Implantation

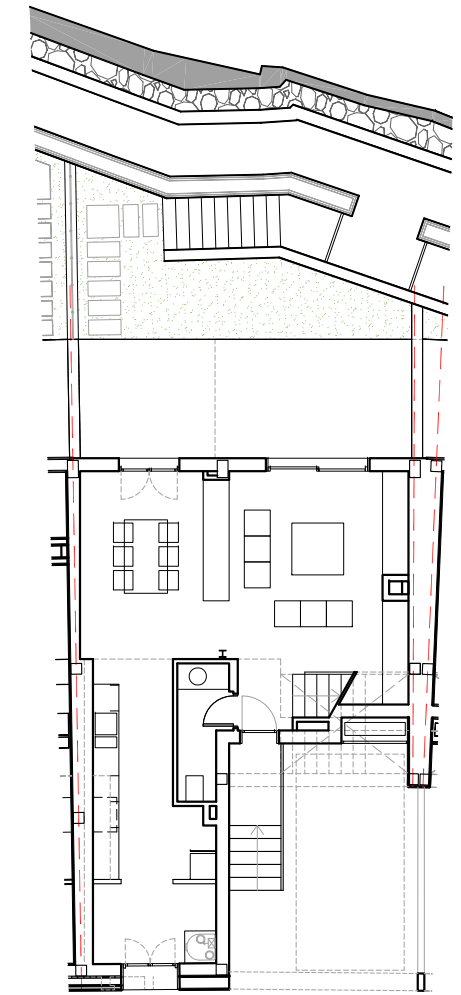


V09

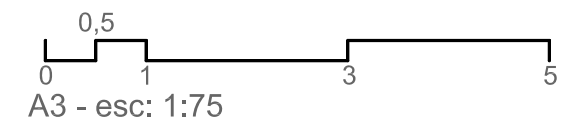
Ground floor



First floor



Parcel



Vivienda 09

Superficie construïda vivienda - Living build area
149.58m² (PB: 72.78m² + P1: 76.80m²)

Superficie construïda terrazas - Terraces build area
53.96 m² (20.43m² + 21.14m² + 12.39m²)

Superficie ajardinada - Garden area
21.33 m²

